



Nano SPY TWIN

Mini Temperature Data Logger 2,4 GHz Radiofrequency Communication



Non contractual photo

Presentation

The Nano SPY sensor measures and records temperature and then transmits its data to a nearby LINK module via 2.4 GHz radio frequency communication. The measurements are then automatically sent to the secure JRI Cloud to be hosted and processed on the JRI-MySirius web application. If thresholds are exceeded, alerts are sent in real-time to react immediately.

It perfectly combines a Nano SPY T1 and a Nano SPY T2. Designed to monitor thermo-controlled enclosures, the device (with the internal sensor) can be fixed with integrated magnets to the outside of an enclosure. In contrast, the external sensor can be fixed to the inside of the same enclosure (room and enclosure T° monitoring). It also offers the possibility to monitor 2 equipment side by side with a single device or a mixed enclosure (e.g. combined refrigerator and freezer) or the High and Low temperatures of the same enclosure (e.g. Pharma enclosure with Hot and Cold point monitoring).

Technical features

	Ambient probe - Internal	PT100 Probe - External
Interface	Status LED and On/Off touch sensitive button	
Measurement range	-30°C à +70°C	-50 °C à +105°C
Accuracy	±0.4°C from -20°C to +40°C and ±0.5°C out of this range	±0.3°C from -20°C to +30°C and ±0.5°C out of this range
Communication frequency	2,4 GHz (802.15.4)	
Memory	10 000 data points	
Temperature sensor	Internal PT100 probe External PT100 probe - Ø5x20mm	
Operating conditions	-30°C to +70°C	
Resolution	0.01	
Measuring and transmission period	1 mn	
Internal memory recording period	Adjustable from 1 mn to 24 hrs	
Response time σ_{90}	~2 mn at 90% of the variation	
Protection	IP65	
Case	Polycarbonate – Food contact	
Dimensions and weight	63 x 42 x 25 mm / ~ 60 g	
Cable length	3m	
Power supply	3,6v Lithium battery - Replaceable	
Battery life	6 years	
Fixation	Fixing eyelets and integrated magnets	
Supplied with	Battery, User manual can be download on www.jri-corp.com	
Compliance	CE, ROHS, FCC, ETS 300-328, EN 12830	
Standard calibration points	-30°C / 0°C / +40°C	

Benefits

- **Easy-to-use**
The sensor is ready to use and has operating and alarm lights



- **Excellent measurement accuracy**



Fixing eyelets

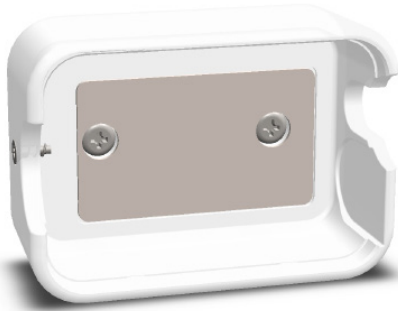


Replaceable battery and non-disconnectable probe

FT 12541 EN B

PART NUMBERS
11541 E : Nano SPY TWIN
11541 X : Nano SPY TWIN without battery

Accessories



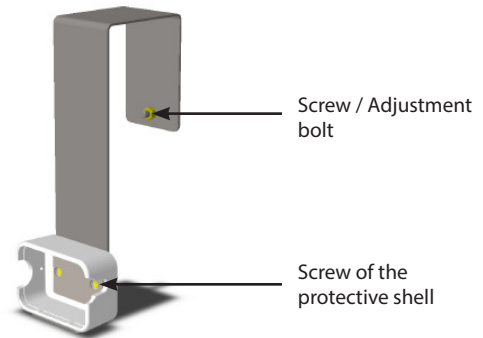
Protective shell

Part nr. 12715

The protective shell is used to protect all Nano SPY mini-data loggers from shocks.

It is supplied with a double-sided adhesive to be glued to all surfaces and an anti-theft screw for the Nano SPY.

It can also be screwed (screws not supplied).



Caliper for protective shell

Part nr. 12716

Clip and Nano SPY Protective Shell

Part nr. 13204

